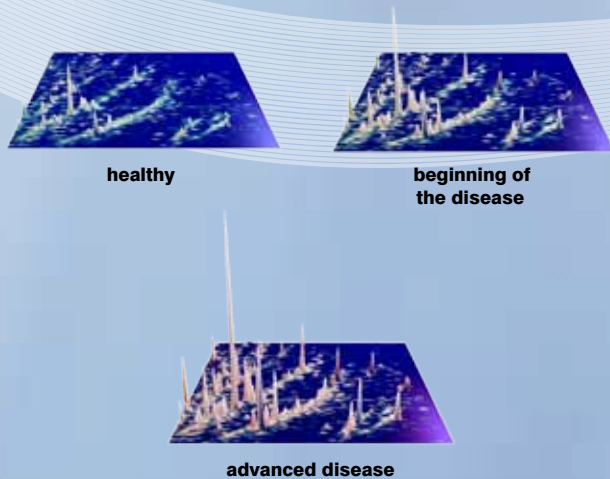


The DiaPat® approach can identify life saving differences and allows early diagnosis of diseases

All (patho-)physiological changes in the body are indicated by proteins/peptides. Changes in proteins reflect the onset of a disease, its progression, and successful therapeutic intervention.



The **DiaPat®** has been developed in partnership with:



The method is the result of multinational collaboration of physicians and scientists from leading Universities and Institutes worldwide.



It has been applied in 40 clinical studies and produced over 120 publications in high ranking peer-reviewed scientific journals. DiaPat® has demonstrated its reliability as a diagnostic tool resulting in successful outcomes for patients.

DiaPat® Health Check

- Bladder cancer (BC)
- Chronic nephropathies (N)
- Diabetic nephropathy (DN)
- Coronary artery disease (CAD)

Specifically designed for men:

- Prostate cancer (PC)

Choose your individual combination! All tests are available individually.

The protein profile of a patient is digitally deposited in a data base and accessible for future comparison with other diagnostic patterns. DiaPat® enables unbiased documentation of the state of health and monitoring of therapy.

Medical practices and centres already applying DiaPat® as well as more details, prices and news are available at www.diapat.com

With compliments from your physician:



www.vote4health.org: Give your opinion on which disease should be investigated by DiaPat® in the future.



Diagnosis from urine
painless | risk-free | reliable

www.diapat.com

The unique **DiaPat®** technology can identify early signs of disease before any clinical symptoms and prior to organ damage. Thus disease progression can be prevented by therapeutic intervention.

More than 6,000 proteins/peptides can be routinely detected and analysed from a urine sample (**Diagnostic Pattern**).

Contact:

DiaPat GmbH
Mellendorfer Strasse 7-9
30625 Hannover
Germany

Tel: +49 (0)511-55 47 44 0
Fax: +49 (0)511-55 47 44 31
Email: arztinfo@diapat.com
Website: www.diapat.com

V1.1 DN11



Science developed in partnership with:



Information

Diabetes mellitus

Diabetes mellitus is a chronic metabolic disease that causes high blood sugar. As high blood sugar levels result in damage to blood vessels, patients with diabetes often suffer from complications.

Diabetic nephropathy (DN) is a chronic kidney disease that develops around 10 to 15 years after the onset of diabetes mellitus. About 25 to 40% of the patients with diabetes will go on to develop diabetic nephropathy.

DN is characterized by a slow, progressive loss of renal function, with a loss of glomerular filtration over a period of months or years. This eventually leads to end-stage renal disease requiring renal replacement therapy (dialysis and/or kidney transplantation).

Diabetic nephropathy is generally detected by measurements of albumin in urine or changes in serum creatinine concentration in blood. However, by the time these methods are effective the damage to the kidney has already occurred.

The DiaPat®-DN test allows the detection of diabetic nephropathy 3 to 5 years prior to the occurrence of clinical symptoms. An accuracy of approximately 94% was revealed in clinical studies.

Patients can benefit greatly from this early detection as appropriate therapy enables preventing or delaying onset of diabetic nephropathy and subsequently end-stage renal disease and dialysis.

Furthermore, the patient's response to the treatment can be monitored and altered if required.

The DiaPat®-DN test provides an accurate and painless diagnostic method for the detection of diabetic nephropathy.

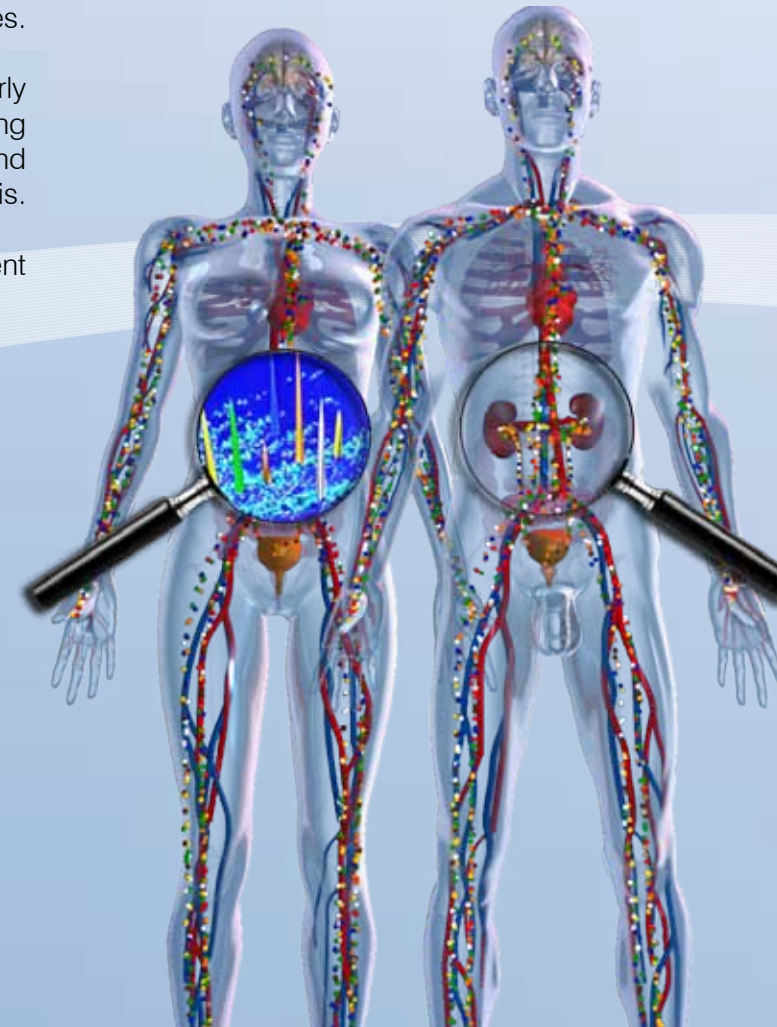
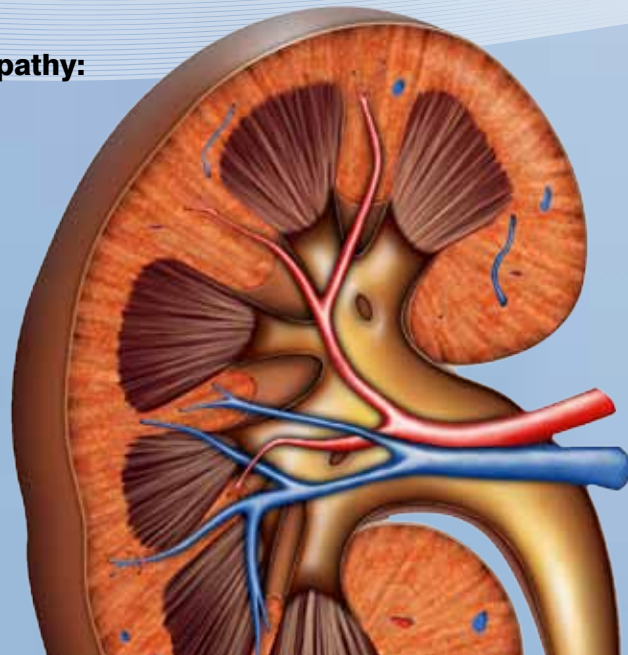
- Early stage diabetic nephropathy has no symptoms
- Early treatment of DN may have positive effects on other complications of diabetes such as heart attack or stroke

Substantial information from one single urine sample

- painless**
 - no needles
- risk-free**
 - no negative side effects
- reliable**
 - precise detection of disease
- efficient**
 - only one urine sample required
- convenient**
 - sampling can be done at home or at the medical practice and the pick-up service is organized by DiaPat®

Risk factors for diabetic nephropathy:

- diabetes
- high blood pressure (arterial hypertension)
- aging
- family history
- smoking



painless

risk-free

reliable

convenient