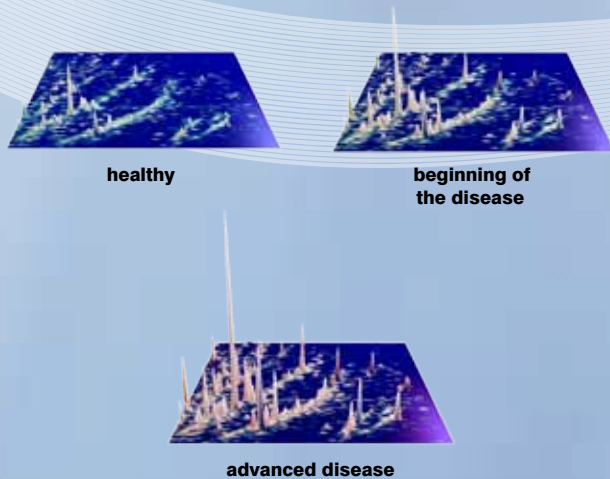


The DiaPat® approach can identify life saving differences and allows early diagnosis of diseases

All (patho-)physiological changes in the body are indicated by proteins/peptides. Changes in proteins reflect the onset of a disease, its progression, and successful therapeutic intervention.



The **DiaPat®** has been developed in partnership with:



The method is the result of multinational collaboration of physicians and scientists from leading Universities and Institutes worldwide.



It has been applied in 40 clinical studies and produced over 120 publications in high ranking peer-reviewed scientific journals. DiaPat® has demonstrated its reliability as a diagnostic tool resulting in successful outcomes for patients.

DiaPat® Health Check

- Bladder cancer (BC)
- Chronic nephropathies (N)
- Diabetic nephropathy (DN)
- Coronary artery disease (CAD)

Specifically designed for men:

- Prostate cancer (PC)

Choose your individual combination! All tests are available individually.

The protein profile of a patient is digitally deposited in a data base and accessible for future comparison with other diagnostic patterns. DiaPat® enables unbiased documentation of the state of health and monitoring of therapy.

Medical practices and centres already applying DiaPat® as well as more details, prices and news are available at www.diapat.com

With compliments from your physician:



Vote4Health
BIOMEDICAL-SPONSORING

www.vote4health.org: Give your opinion on which disease should be investigated by DiaPat® in the future.



Diagnosis from urine
painless | risk-free | reliable

www.diapat.com

The unique **DiaPat®** technology can identify early signs of disease before any clinical symptoms and prior to organ damage. Thus disease progression can be prevented by therapeutic intervention.

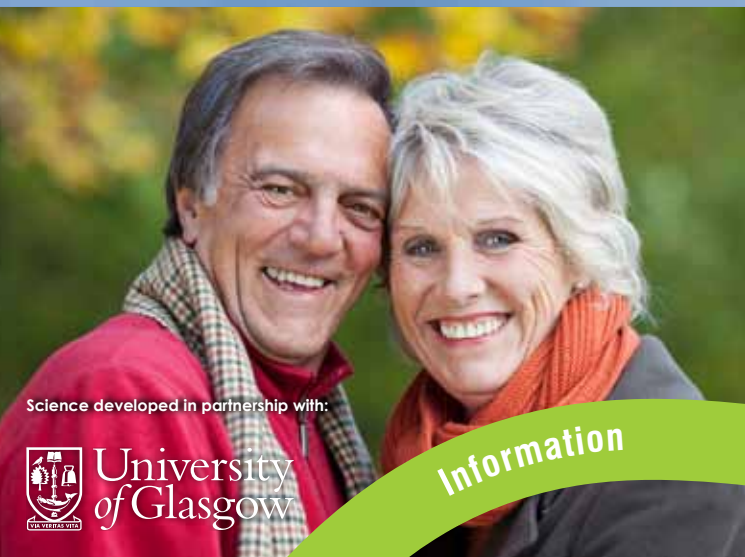
More than 6,000 proteins/peptides can be routinely detected and analysed from a urine sample (**Diagnostic Pattern**).

Contact:

DiaPat GmbH
Mellendorfer Strasse 7-9
30625 Hannover
Germany

Tel: +49 (0)511-55 47 44 0
Fax: +49 (0)511-55 47 44 31
Email: arztinfo@diapat.com
Website: www.diapat.com

V1.1 N11

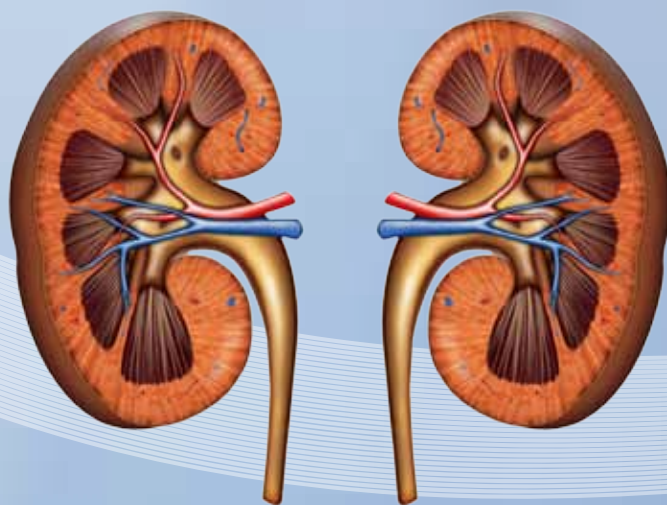


Science developed in partnership with:



Detect renal damage in time

Chronic kidney disease (CKD) and renal damage is characterized by a slow, progressive loss of renal function over a period of months or years that finally leads to end-stage renal disease (ESRD). Patients with ESRD require renal replacement therapy (dialysis and/or kidney transplantation).



The most common causes of chronic kidney disease in North America, Europe, and Japan are diabetic nephropathy, hypertension, and inflammation of the internal kidney structures (glomeruli).

Diagnosis of chronic kidney disease is usually established at a late stage, when substantial organ damage has already occurred.

The DiaPat[®]-N test allows the detection of chronic kidney diseases at a very early stage with an accuracy of approximately 94%.

Avoiding biopsy

Furthermore, the DiaPat[®]-NDif test enables **differential diagnosis** of chronic kidney disease.

This is particularly helpful, as diagnosis of kidney diseases often may require a renal biopsy. Due to the considerable risks and adverse side-effects of this procedure, a biopsy is performed at a hospital.

The DiaPat[®]-NDif test avoids hospitalisation and has no side-effects. This is especially important for children (avoiding anaesthetics), patients with only one kidney, or a deformed kidney (e.g. horse shoe kidney) or transplanted kidney as well as patients with an increased risk of bleeding.

In addition to the detection of CKD, at present, the DiaPat[®]-NDif test enables differentiation between the following renal diseases:

- Minimal Change Disease (MCD)
- Membranous Glomerulonephritis (MNGN)
- Focal Segmental Glomerulosclerosis (FSGS)
- Immunoglobulin-A-Nephropathy (IgA-Nephropathy)
- Lupus Nephritis (SLE)
- Vascular Nephropathy
- Diabetic Nephropathy

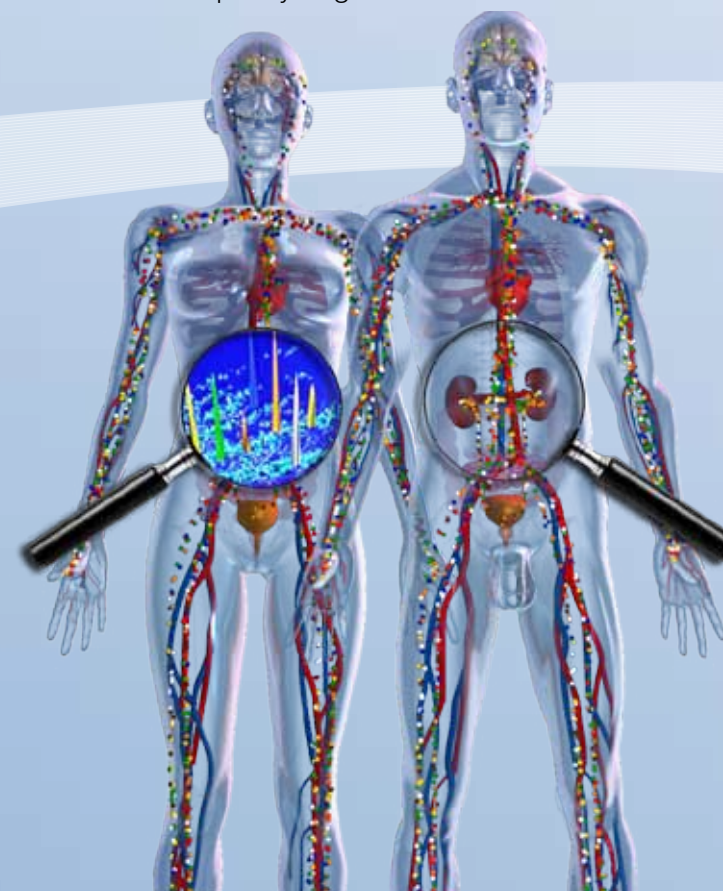
Risk-free and reliable

DiaPat[®] provides an accurate and painless diagnostic method for the detection of chronic kidney disease.

The test is an important complement to routine diagnostics, confirming (or not) whether a kidney biopsy is really necessary.

Urine instead of blood

Clinical studies have shown, that in contrast to blood, urine is very stable. In blood the diagnostic information quickly degenerates.



Advantages of DiaPat[®] tests

Substantial information from one single urine sample

- painless** ▪ no needles
- riskless** ▪ no negative side effects
- reliable** ▪ precise detection of disease
- efficient** ▪ only one urine sample required
- convenient** ▪ sampling can be done at home or at the medical practice and the pick-up service is organized by DiaPat[®]



painless

risk-free

reliable

convenient