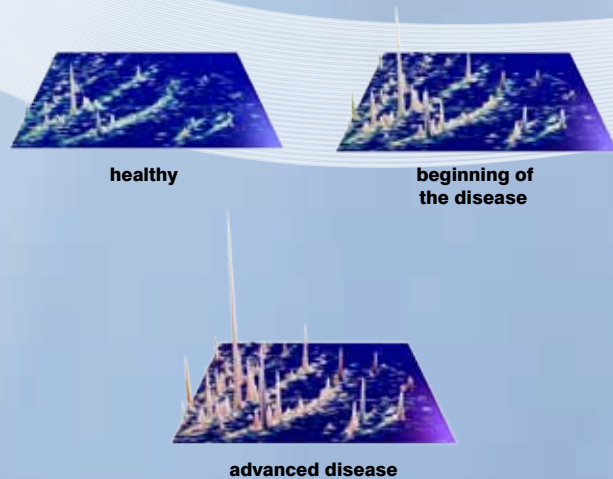


The DiaPat® approach can identify life saving differences and allows early diagnosis of diseases

All (patho-)physiological changes in the body are indicated by proteins/peptides. Changes in proteins reflect the onset of a disease, its progression, and successful therapeutic intervention.



The **DiaPat®** has been developed in partnership with:



The method is the result of multinational collaboration of physicians and scientists from leading Universities and Institutes worldwide.



It has been applied in 40 clinical studies and produced over 120 publications in high ranking peer-reviewed scientific journals. DiaPat® has demonstrated its reliability as a diagnostic tool resulting in successful outcomes for patients.

DiaPat® Health Check

- Bladder cancer (BC)
- Chronic nephropathies (N)
- Diabetic nephropathy (DN)
- Coronary artery disease (CAD)

Specifically designed for men:

- Prostate cancer (PC)

**Choose your individual combination!
All tests are available individually.**

The protein profile of a patient is digitally deposited in a data base and accessible for future comparison with other diagnostic patterns. DiaPat® enables unbiased documentation of the state of health and monitoring of therapy.

The unique **DiaPat®** technology can identify early signs of disease before any clinical symptoms and prior to organ damage. Thus disease progression can be prevented by therapeutic intervention.

More than 6,000 proteins/peptides can be routinely detected and analysed from a urine sample (**Diagnostic Pattern**).

Medical practices and centres already applying DiaPat® as well as more details, prices and news are available at www.diapat.com

With compliments from your physician:



Vote4Health
BIOMEDICAL-SPONSORING

www.vote4health.org: Give your opinion on which disease should be investigated by DiaPat® in the future.

Contact:

DiaPat GmbH
Mellendorfer Strasse 7-9
30625 Hannover
Germany

Tel: +49 (0)511-55 47 44 0
Fax: +49 (0)511-55 47 44 31
Email: arztinfo@diapat.com
Website: www.diapat.com



Diagnosis from urine
painless | risk-free | reliable



Science developed in partnership with:



Information

Detect prostate cancer in time

Prostate cancer ranks third among cancers in men.

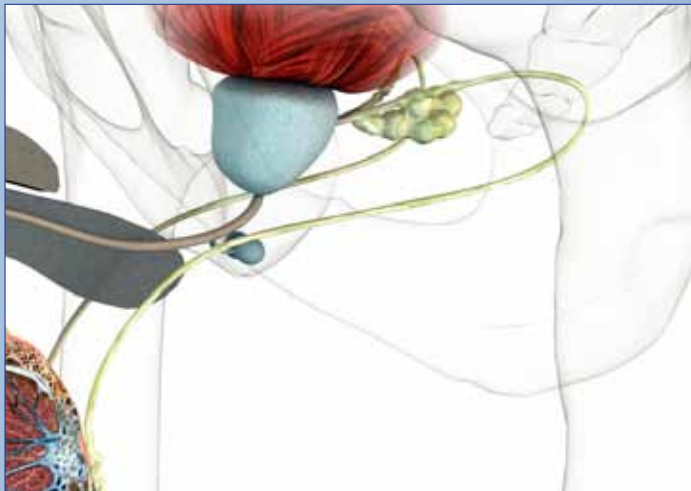
Worldwide, several hundred thousand men die each year from prostate cancer.

Risk factors:

- advanced age (>50)
- ethnicity
- family history of cancer
- smoking
- frequent prostatic inflammation

At early stages, it is possible to cure prostate cancer in 80 to 90% of cases with only minimal or short-term adverse drug reactions.

Later in course of disease, cancer might spread to other organs, forming secondary tumours, so called metastases.



Avoiding biopsy

A positive PSA test (> 4 ng/ml) often results in prostate biopsies. Inflammations/infection and bleeding are common side effects of this procedure.

By analysing prostatic secretion from first void urine, the DiaPat®-PC test enables identification of patients not harbouring prostate cancer with high probability that therefore should not undergo prostate biopsy.

The DiaPat®-PC test is a non-invasive, risk-free and highly reliable diagnostic method that can help to reduce the number of biopsy interventions with their related risks.

PSA is of limited value in the discrimination of benign and malignant prostate conditions and results in 70% false positive test results.

PSA-test	Biopsy	DiaPat®- PC
Blood sample	Tissue samples are collected using 6- 12 individual needle biopsies	Urine sample
≈ 75% of positive test results are false positive (suspicion of cancer cannot be confirmed) ²	In 25-55% of patients with cancer, needles miss the tumour (false negative biopsy) ³	Accurate tumour detection in 9 out of 10 cases¹

¹ Dan Theodorescu et al., 2008, PROTEOMICS Clinical Applications

² Schroeder et al., 2009, NEJM

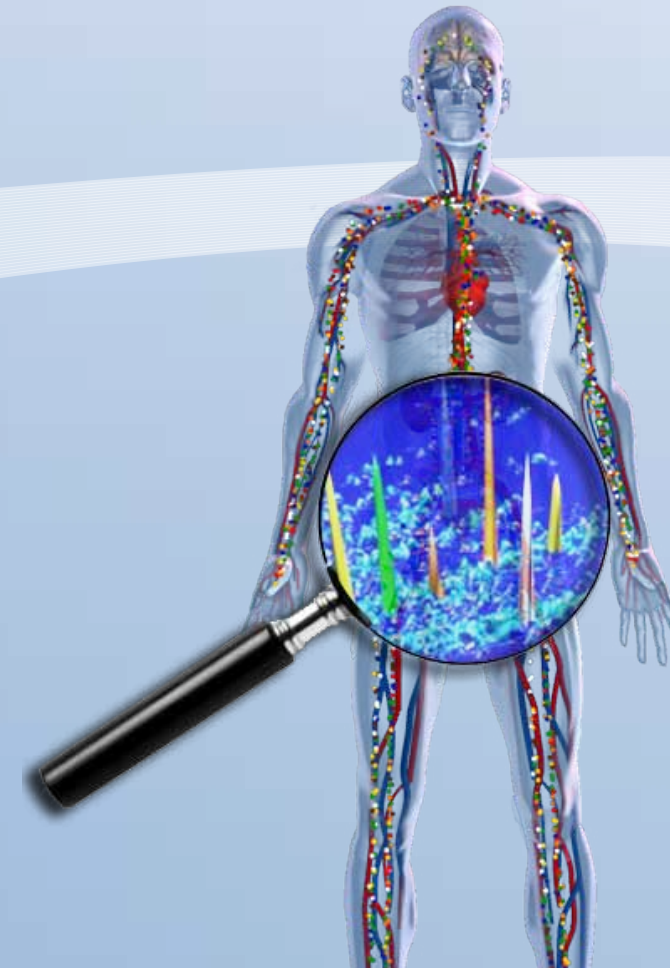
³ Anastasiadis et al., 2006, Eur. Urol. Roehl et al., 2002, J. Urol.

In **blinded, multicenter** clinical studies, the DiaPat®-PC test showed **high accuracy** in detection of prostate cancer with sensitivity of **91%**.¹

Risk-free and reliable

The DiaPat®-PC test does not affect everyday life, because it does not require any pre-treatment or aftercare (e.g. taking antibiotics) as invasive biopsy methods.

Due to its high reliability a negative DiaPat®-PC test result allows watchful waiting and the DiaPat®-test can be repeated at any time for control purposes. A positive test result provides a clearer indication for a biopsy than PSA testing alone.



Advantages of DiaPat® tests

Substantial information from one single urine sample

- painless**
 - no needles
- riskless**
 - no negative side effects
- reliable**
 - precise detection of disease
- efficient**
 - only one urine sample required
- convenient**
 - sampling can be done at home or at the medical practice and the pick-up service is organized by DiaPat®



painless

risk-free

reliable

convenient